

TRANSPORTATION SYSTEM PLAN 2040

Planning connections for our future



Interactive Map User Guide

Maricopa County
Department of Transportation

October 2020



Table of Contents

1.0 Background	3
2.0 Tips.....	3
2.1 Navigating the Map	3
2.2 Making a Comment	4
2.3 Making an Additional Comment.....	6
2.4 Support a Comment	6
2.5 Share a Comment	7
3.0 Tools.....	7
4.0 Examples of Comments	8
4.1 Capacity	8
4.2 Pavement Preservation.....	9
4.3 Bike	9
4.4 Pedestrian	10
4.5 Drainage	10
4.6 Safety	11
4.7 Bridge	11
4.8 Intelligent Transportation System (ITS).....	12
4.9 Particulate Matter 10 (PM10)	12
5.0 Contact.....	12



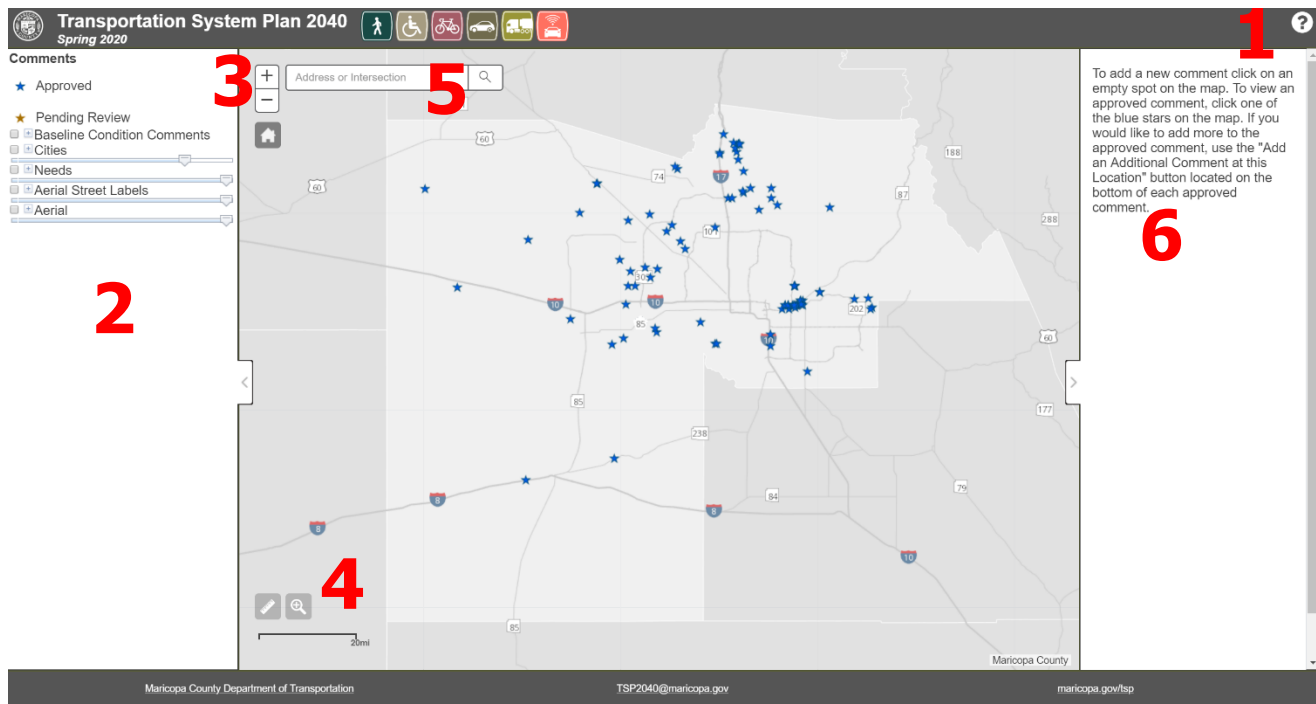
1.0 Background

Maricopa County Department of Transportation (MCDOT) completed the Transportation System Plan 2035 (TSP 2035) in 2016. The plan identified capacity improvements as well as provided awareness for alternative mode accommodation. In 2018, MCDOT completed the Active Transportation Plan which identified pedestrian and bicycle gaps in the system. MCDOT is now updating the TSP to include all potential improvements through 2040. In this updated plan, TSP 2040, MCDOT will combine all efforts including capacity, bicycle, pedestrian, maintenance, technology needs, etc.

This map provides a way for citizens to provide input to the plan and help potential improvements to the transportation system. Input from the public is necessary for informing future transportation related projects. Below provides tips, tools, and examples on how to provide input and assist in the TSP 2040 process.

2.0 Tips

2.1 Navigating the Map

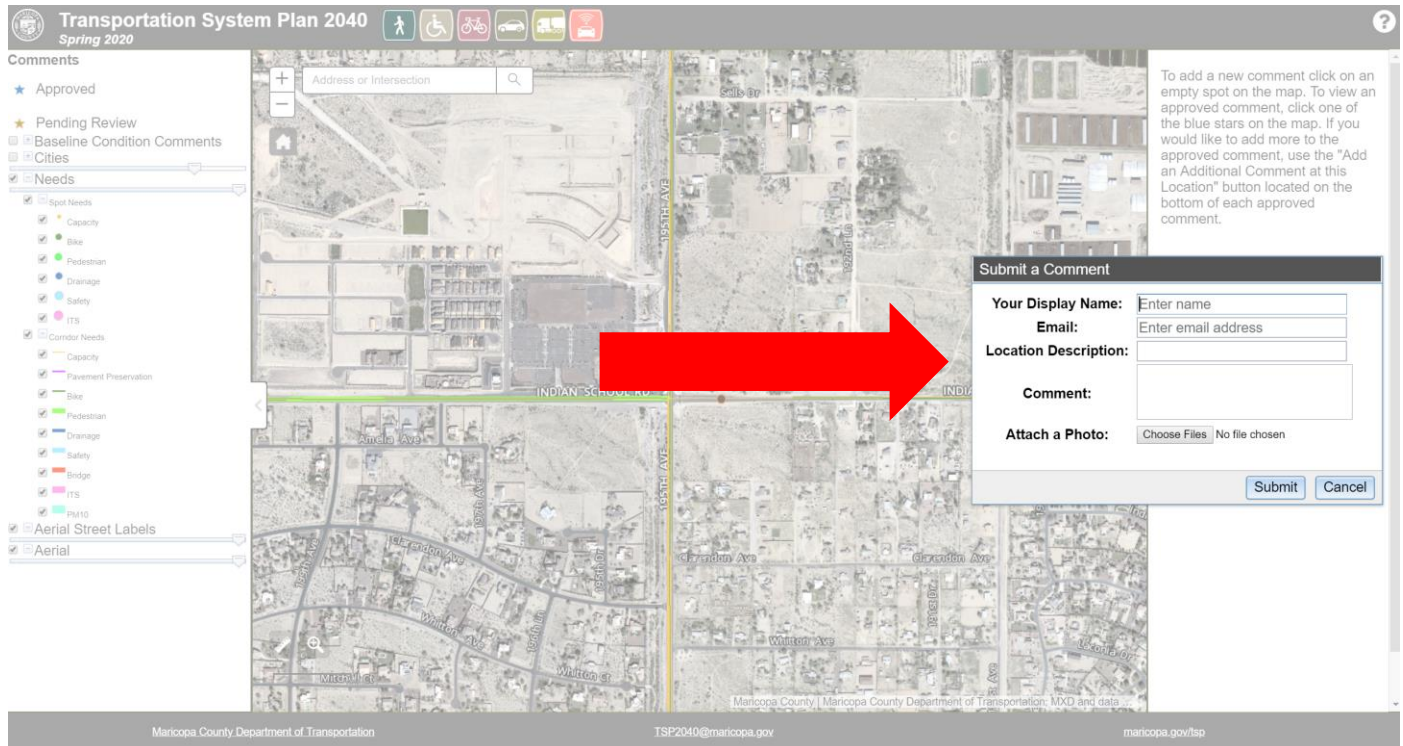


1. **Information:** By clicking on the "?" icon, it will direct you to this PDF.
2. **Layers:** All layers are located on the left hand panel. These layers can be clicked on and off, and transparencies can be adjusted.
3. **Extent:** You can change your extent, or zoom, using the "+" and "-". To return to the full County extent, click the home button.
4. **Measure and Zoom:** In the bottom left corner you have the measure tool and an additional zoom tool. To turn the tool on click the symbol. To turn off the tool click the symbol again.
5. **Search:** To reach a specific location, type in a known address or cross streets. The map will zoom to that location.
6. **Comments:** When a comment is selected it will be displayed in the right panel.



2.2 Making a Comment

To make a comment in the map, click in the map area at your desired location. Once you click, the comment form will appear. If you want to readjust your location, select cancel, and click again.



Next, fill out the comment form. Include your name, email, approximate location (cross streets, address, etc.), and provide further detail in the comment box. You may attach a photo or document that may pertain to your comment as well. Once all your information is filled out, click submit.

Submit a Comment

Your Display Name:

Email:

Location Description:

Comment:

Attach a Photo: No file chosen



After you submit your comment, it will appear orange which means it is pending review.



Once it is approved it will change to blue and you will be able to view it, support it, and add an additional comment to it.





2.3 Making an Additional Comment

If you would like to make an additional comment to an approved comment, select that approved comment and click "Add an Additional Comment at this Location". Once clicked, a new comment form will appear. Fill out the information as appropriate.

Test Tester
Date Submitted: 7/26/2019
Location Description: Camelback at Beardsley Canal
Comment: Crossing is needed.

Support: 0 | I SUPPORT (0)

Add an Additional Comment at this Location

Submit a Comment

Your Display Name:
Email:
Location Description:
Comment:
Attach a Photo: No file chosen

2.4 Support a Comment

If you do not have any additional input but would like to support a comment. Select the comment you would like to support. Click the "I Support" button.

Test Tester
Date Submitted: 7/26/2019
Location Description: Camelback at Beardsley Canal
Comment: Crossing is needed.

Support: 0 | I SUPPORT (0)

Add an Additional Comment at this Location

Test Tester
Date Submitted: 7/26/2019
Location Description: Camelback at Beardsley Canal
Comment: Crossing is needed.

Support: 1
You have supported this comment.

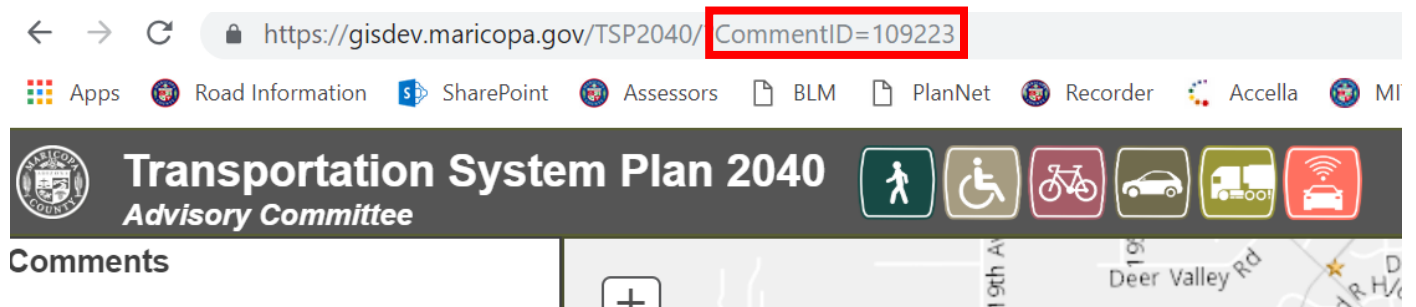
Add an Additional Comment at this Location








You cannot support a comment more than once. When you return to the comment later it will still display "You have supported this comment." If you have supported a comment by accident and would like to remove it, please contact TSP2040@maricopa.gov.

2.5 Share a Comment

All approved comments have a unique comment ID. When a comment is selected it will automatically change the web address. You can copy the web address and share it. For example, if you made a comment in regards to a potential bicycle improvement and you want your neighbor to support it, you can send this link directly to them. When you click the link it will open up the map and zoom directly to that specific comment.



3.0 Tools

Tool	Description
	<p>Zoom +: Zoom In -: Zoom Out</p>
	<p>Home Return to the full extent of the map (entire Maricopa County)</p>
	<p>Measure Measure the area, distance, or location.</p>
	<p>Selected Zoom Click and drag to zoom to a defined area.</p>
	<p>Adjustable Layers Drag the bar under the layer from left to right to increase and decrease the transparency of the layer onto the map.</p>



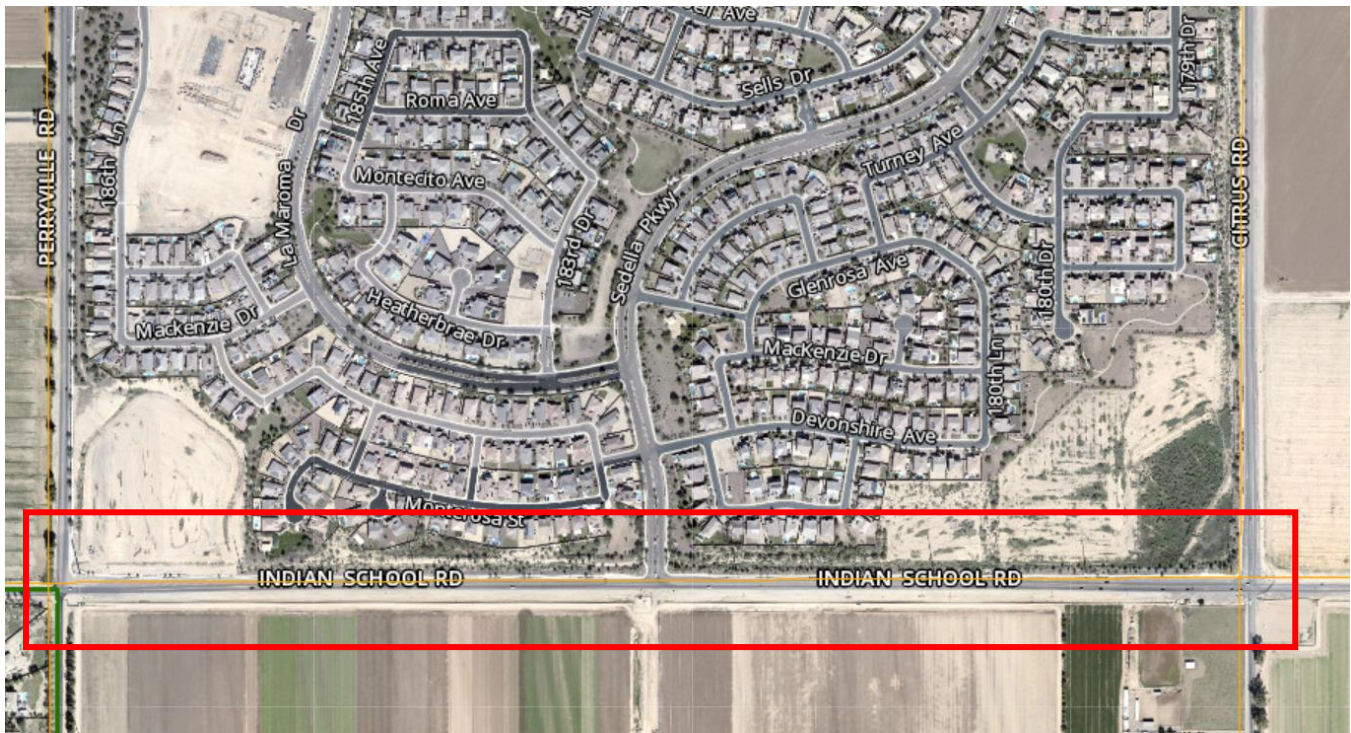
<input type="text" value="Address or Intersection"/>	<p>Search Type in address or intersection to zoom to location</p>
<p>Add an Additional Comment at this Location</p>	<p>Additional Comments Pins a comment to an existing comment</p>
	<p>Information This document in PDF.</p>

4.0 Examples of Comments

All projects are potential improvements for the next 20 years. Currently nine categories have been identified, the below sections provide an example of each. Additional projects and/or categories may be added based on comments received.

4.1 Capacity

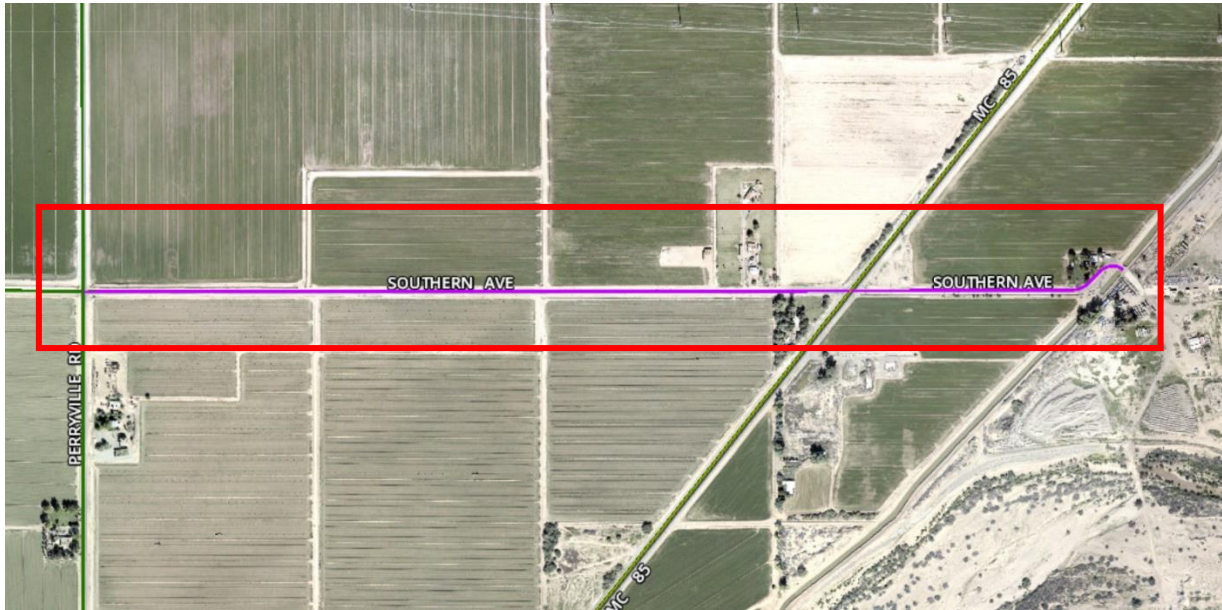
Capacity projects have been identified to add additional through lanes to the roadway network. For example, a capacity project is identified on Indian School Road from Perryville Road to Citrus Road. Capacity projects may include other project types such as bicycle and pedestrian, drainage, etc. within the project limits.





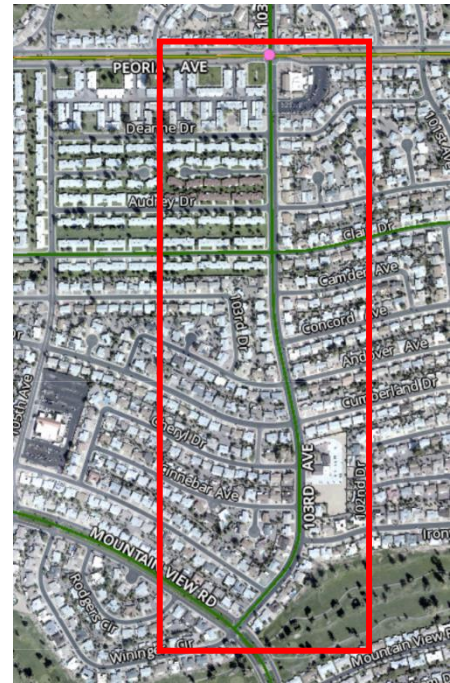
4.2 Pavement Preservation

Pavement preservation projects have been identified to rehabilitate the existing roadway pavement. For example, Southern Avenue from Perryville Road to just east of MC 85 is identified as a project for pavement preservation.



4.3 Bike

Bicycle projects are identified to complete bicycle gaps on existing roadways. This can include bike lanes, paved shoulders, signage, etc. For example, 103rd Avenue from Mountain View Road to Peoria Avenue is identified bicycle project.





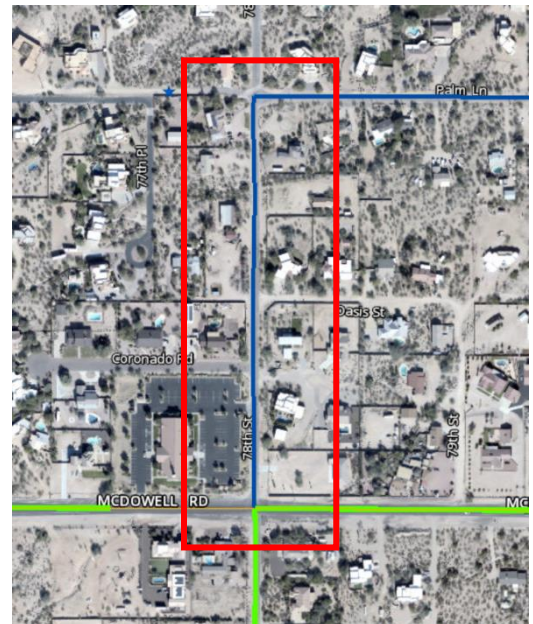
4.4 Pedestrian

Pedestrian projects are identified to complete pedestrian gaps on existing roadways. This can include sidewalk, curb ramps, shared use paths, etc. Pedestrians are considered those walking, children on bicycles, skateboarders, motorized wheelchairs, equestrians, etc. For example, 103rd Avenue from Olive Avenue to just south of Kelso Drive has been identified as a pedestrian project.



4.5 Drainage

Drainage projects have been identified to improve the drainage affecting existing roadways. This can include culverts, basins, etc. For example, 78th Street from McDowell Road to Palm Lane has been identified as a drainage project.





4.6 Safety

Safety projects have been identified to provide additional safety to the roadway user. This can include guardrail, traffic signals, etc. For example, the intersection of Baseline Road and Meridian Road has been identified as a safety project.



4.7 Bridge

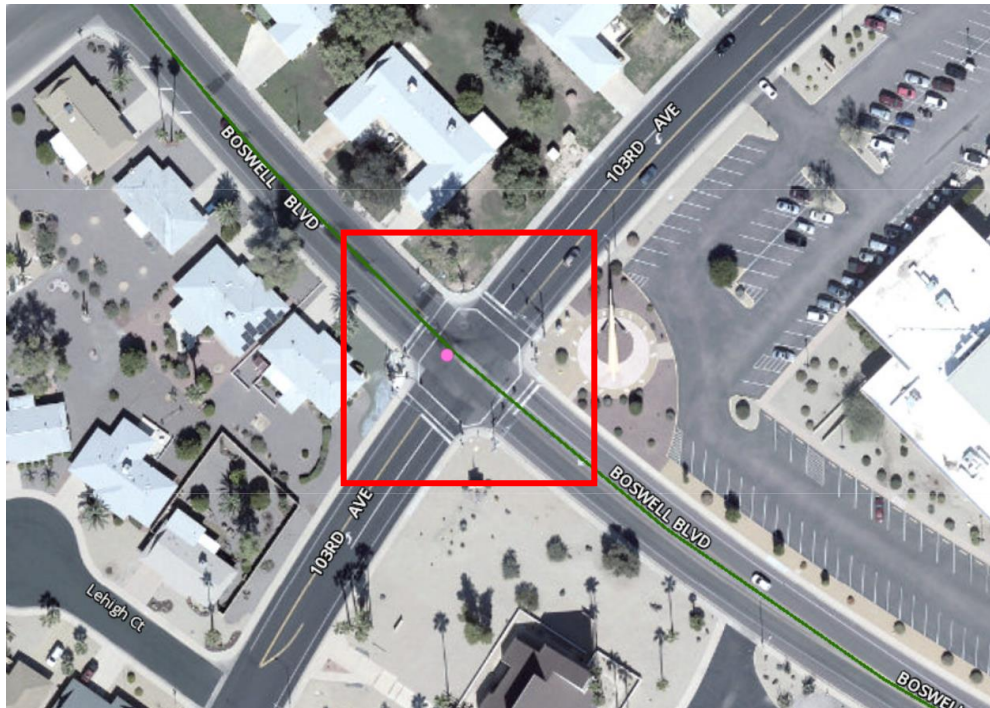
Bridge projects have been identified to provide additional connectivity or rehabilitation to existing connections. For example, Warner Road from Power Road to Sossaman Road has been identified as a bridge project. Currently there is no access to Power Road via this alignment and residents must go north to Elliot Road to travel towards Power Road.





4.8 Intelligent Transportation System (ITS)

ITS projects have been identified to provide congestion relief on existing roadways. This can include connected signals via fiber technology. For example, the intersection of 103rd Avenue and Boswell Boulevard has been identified as an ITS project.



4.9 Particulate Matter 10 (PM10)

PM10 projects have been identified to improve existing dirt roadways. This can include pavement construction, signage, dust suppressant, etc. For example, 16th Street from Gaffney Road to Venado Drive has been identified as a PM10 project.

5.0 Contact

For additional help regarding the Interactive Map, please contact TSP2040@maricopa.gov.

